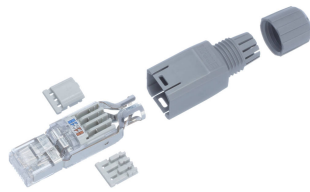


Product information

Plug FM45 Cat.5e shielded or unshielded AWG 23 to 26
IP20 568A/B plastic housing R&M

R312231
966704005
10 pcs



030.5832

- Field terminated RJ45 connector
- Termination of unshielded cable (UTP)
- Termination of shielded cable (STP)
- Approved for solid and stranded wire AWG 23 to AWG 26
- Optional visual colour coding clip
- Plug FM45 Cat.5e
- Plastic housing with nut
- Copper foil
- Installation instructions

Technical Data

DESCRIPTION [UNIT]	VALUE/VALUE RANGE
Standard / norm	ISO/IEC 11801 IEC 60603-7-2/3 EN 50173 ANSI/TIA-568-C.2 PoE (IEEE 802.3af), PoEP (IEEE 802.3at), 4Ppoe (IEEE 802.3bt) IEC 60512-00-001/002
Protection class IP	IP 20 IP 20
Category	Cat. 5e ISO/IEC
Wiring diagram	T568A and T568B
Cable overall diameter	4.5 - 8.0 mm 4.5 - 8.0 mm
Number of wires	8
Wire type	Wire or stranded wire
Colour Coding	Yes, optional
Dust Protection	No
Cable Strain Relief	50 N
Re-termination	≥4 according IEC 60352-4 Re-terminations may be performed with wire of either larger or equal size than originally terminated.
Contact Surface	>1.2µm gold over 1.2µm nickel
Contact material	Bronze (CuSn6)
Pollution Degree	2 according to IEC 61010-1
UL Classification	UL94-V0
Wire diameter	Wire: 0.4 - 0.54mm (0.64mm depending on cable construction) Stranded wire: 0.12mm ² - 0.32mm ²
Approved wire diameter with insulation	1.6 mm / 0.063 in
Plug type twisted pair	RJ45

Mechanical Data

DESCRIPTION [UNIT]	VALUE/VALUE RANGE
Dimensions	59.0 mm x 14.0 mm x 14.6 mm / 2.323 in x 0.551 in x 0.575 in (W x H x D)
Color	Plug: transparent Housing: traffic gray (RAL 7042)
Material	Polycarbonate (plug) polyamide (housing)
Mating Cycles	> 750



Climatic Data

DESCRIPTION [UNIT]	VALUE/VALUE RANGE
Operation temperature	-20 °C to +70 °C / -4 °F to +158 °F

Electrical data

DESCRIPTION [UNIT]	VALUE/VALUE RANGE
Contact Resistance	Wire - IDC < 1mΩ Stranded wire - IDC < 5mΩ Signal contact - screen < 20mΩ
Input-Output Resistance	100 mΩ
Insulation Resistance	> 1GΩ (100V)
Dielectric Strength	Contact - contact >1000VDC Shield - contact >1500VDC, 1min.
Nominal Current	1.55A @20°C
Overvoltage Category	I according to IEC 60664-1

Field-terminated RJ45 plug connector, shielded and unshielded, Cat.5e 8-pole, terminated in IDC technology, suitable for solid or stranded wires, 2- to 8-wire conductors of diameter AWG 23 to AWG 26 (AWG 23/7 - 26/7), housing IP20, for cable diameters of 4.5mm to 8.0mm, coding in acc. with TIA 568A/B.

	Description	PU	Product No.
	Clip Security Level 1 FM45 Plug IP20 anthracite plastic housing R & M	10 pcs	R311561
	Clip Security Level 1 FM45 Plug IP20 blue plastic housing R&M	10 pcs	R311580

	Description	PU	Product No.
	Clip Security Level 1 FM45 Plug IP20 brown plastic housing R&M	10 pcs	R311569
	Clip Security Level 1 FM45 Plug IP20 yellow plastic housing R&M	10 pcs	R311579
	Clip Security Level 1 FM45 Plug IP20 gray plastic housing R&M	10 pcs	R311570
	Clip Security Level 1 FM45 Plug IP20 green plastic housing R&M	10 pcs	R311577
	Clip Security Level 1 FM45 Plug IP20 red plastic housing R&M	10 pcs	R311571
	Clip Security Level 1 FM45 Plug IP20 violet plastic housing R&M	10 pcs	R311575